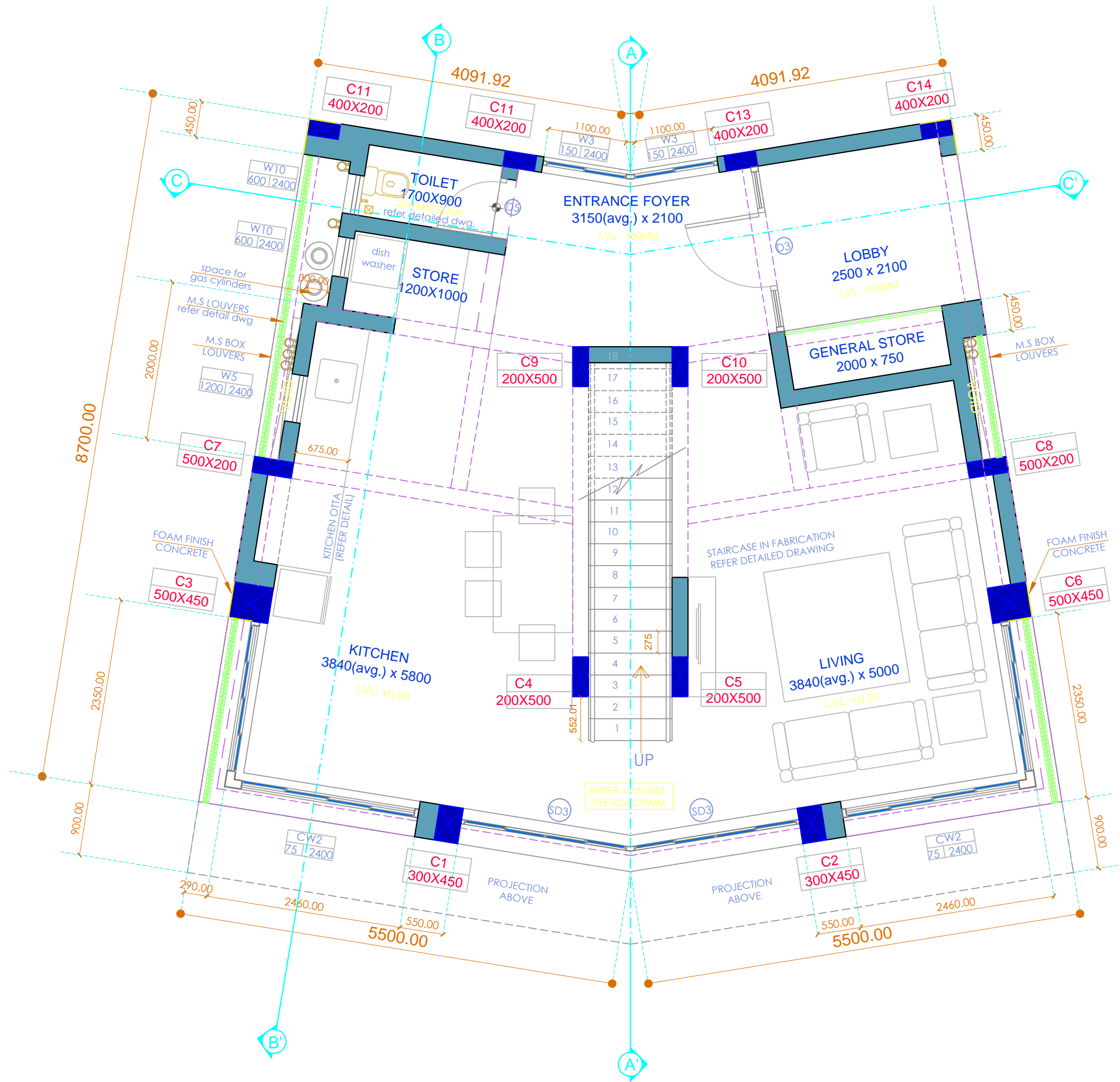





KEY PLAN  
PLOT NO. 21,24 & 27



GROUND FLOOR PLAN

GENERAL NOTES :	1. Do not scale this drawing.	6. All the sizes, locations and levels of r.c.c. members shall be as per structural consultant's drawing.
	2. Kindly scrutinize this drawing thoroughly well advance. any discrepancy found in this drg. be brought to the immediate notice of architects before execution.	7. T.O.C. = Top of Concrete; T.O.F. = Top of Finish; T.O.W. = Top of Wall; C/C = Center to Center; O/O = OUT TO OUT; RWP = Rain water pipe; RWS = Rain water spout
	3. This drawing is a copy right and must not be disclosed, used or reproduced in any form without express permission of architects, <b>D'signature</b> .	8. This drawing supercedes all the previous drawing.
	4. For all structural sizes & details ref. to r.c.c. consultant's drg.	9. All the co-ordinates given are w.r.t. the o-o, Unless & until mentioned
	5. This drg. shall be referred with the relevant structural, Landscape, Plumbing Watersupply & Electrical drawings.	10. All the dimensions are in <b>MM</b> unless otherwise specified.

DRN BY.	CHKD. BY:	S C A L E		TITLE: - GROUND FLOOR PLAN	
ROHIT	ROHAN	N T S		REMARK - GOOD FOR CONSTRUCTION	
D A T E	PRINTS ISSUED TO	PURPOSE	NO	C O N S U L T A N T S	
2017.08.10	KUNAL KUMTHEKAR	GOOD FOR CONSTRUCTION		structural - <b>AXIS CONSULTANTS</b>	
2017.08.10	MANOJ GODBOLE	GOOD FOR CONSTRUCTION		landscape - <b>SAMA LANDSCAPE ARCHITECTS</b>	
				plumbing - <b>PHOENIX CONSULTANTS</b>	
				electrical - <b>CEEC ELECTRICAL CONSULTANTS</b>	

D W G .   N O .	J O B   N O .	N O R T H 
W.D. - J 002A	1            4            1	
O W N E R - K P I N   R E A L   E S T A T E   V E N T U R E S		
P R O J E C T		
P R O P O S E D   H O L I D A Y   H O M E S , A T K E N I S H A   H O M E S , S . N O . 6 4 / 1 , 6 4 / 2 / 1 , A T P A V S A L W A D I , T A L - S U D H A G A D , R A I G A D .		

This drawing is property of **DSIGNATURE** and must be returned on request. it is not to be used for any other purpose nor may it be copied or lent without our authority in writing

**DSIGNATURE**  
architects | interiors | graphics  
flat no. 3, Nimit apartment, off rajamantri road, karve nagar, pune 411 052 em@il : dsignature.aig@gmail.com